

POLLINATOR PROFILES

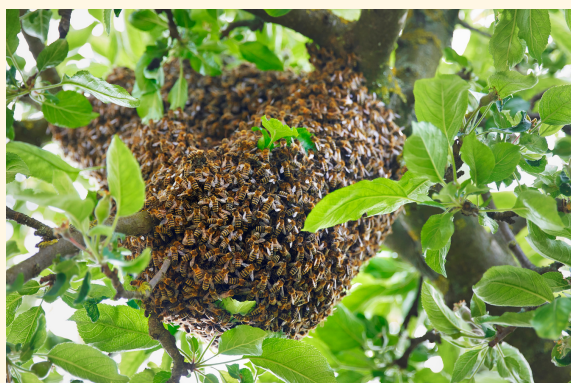
HONEYBEES



Honeybees are a well-known genus of bee, consisting of 9-12 species, with the scientific name *Apis*. The Western honeybee (*Apis mellifera*) is found coast to coast, though they are not actually native to North America.



Colonies are generally most active late morning to early afternoon in spring and summer. Worker bees make up 99% of a colony. They are about 15mm long and light brown in colour, with golden yellow and dark brown bands. Honeybees will often be noticed in swarms (see below), in which they instinctively gather to reproduce. You may also notice their nests, typically made in rock crevices or hollow trees, around which you will see a lot of activity.



Fun fact: Honeybees are the only bees in Canada whose honey we consume!