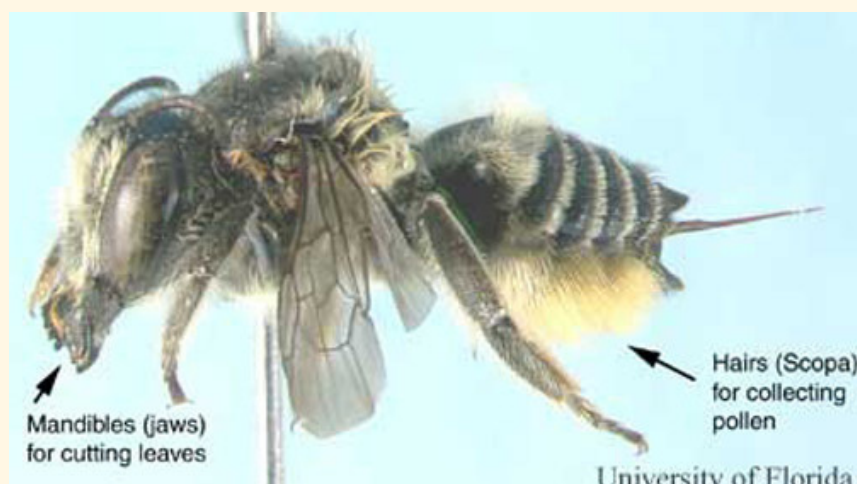


POLLINATOR PROFILES

LEAFCUTTER BEES



Leafcutter bees (*Megachile*) are a family of bees with about 240 species in North America. Coast to coast, and are especially important to agriculture in the west. Their famous leafcutting behaviour typically peaks in June and July, when they are busy making their nests. Leafcutter bees are black and furry, and about 6-20mm.



Females are distinct in their yellow, hairy abdomen, which is where they collect pollen.

They leave a distinct clue in their journey: perfect half-moon shapes cut out of leaves. If you see this, you can be fairly sure there is at least one leafcutter bee nearby, since they have a short flying range of about 300ft. Females use the leaf material to build their solitary nests, which you may also find nearby in a hollowed weed or partially rotten wood. Their favourite plants include rose, lilac, green ash and Virginia creeper.