

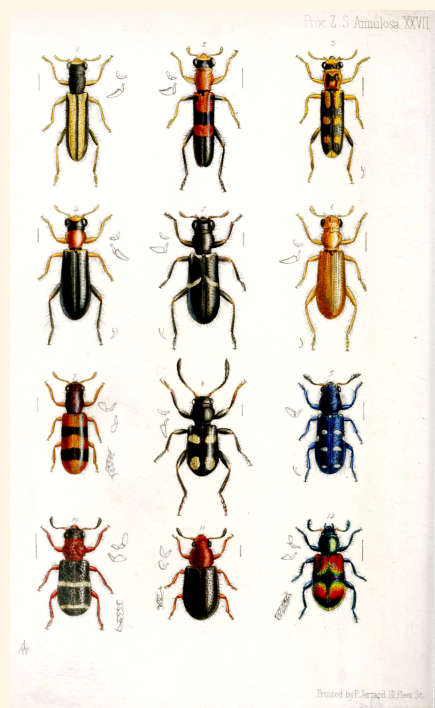
POLLINATOR PROFILES

CHECKERED BEETLES



The checkered beetles are a family of beetles, consisting of about 3300 species worldwide. Their scientific name is *Cleridae*. *Trichodes nutalli* (red-blue checkered beetle) is the most prominent pollinator, and is found from Alberta to Quebec.

Adult red-blue checkered beetles are most likely to be seen from late spring to early summer. They all have a wide head and a long, narrow body with hairs that pollen easily sticks onto. The red-blue checkered



beetles have wings with three bands that can be yellow, orange, or red, and are 8-11mm long. Adults can commonly be found in places where there are many nectar- and pollen-rich flowers since they use both for energy and tend to prefer flowers for a resting place. Larvae are typically found in and on trees nearby.

Fun fact: They are known to eat the larvae of other insect species!