

# Pepper: Peacework

## Starting & Ending Population size

Starting population size:  
35 (Stable seed stock) 60+ (Poor seed stock)

Harvest population size: Fruits for seed production should be harvested from a minimum of **20 plants**.

## Isolation

Minimum 200m from other sweet peppers, 1.5km from any hot peppers.

## A note about germination:

*Seeds harvested from mature-green fruits may germinate less than 10%, but seed extracted from peppers ripened off the vine often germinate as high as 90%.*



## Before Flowering

*Rogue plants:*  
Low vigour (5-10% of population)  
Small leaf size



## Before Fruit Maturity

*Select fruits:*  
Blocky shape  
Wall thickness  
Size



## At Fruit Maturity

*Rogue plants:*  
Signs of disease  
*Select plants for:*  
Good leaf cover  
*Select fruits for:*  
Early-ripening  
Sweetness

## Further Rogueing & Selection Information

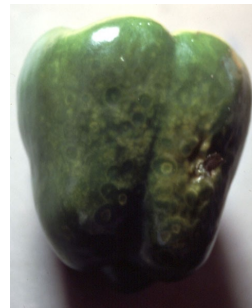
Before plants begin to flower: Remove any plants with low vigour and any plants displaying small leaf size. Small-leaved plants tend to be pungent and are likely a result of a cross between a hot and sweet pepper.

Before fruits reach edible maturity: Select fruits with a med-large, blocky shape and thick walls. Remove fruits that are off-type. Remove any small, weak, or unproductive plants. Pay special attention for development of Cucumber Mosaic Virus and remove any infected plants.

When fruits begin to turn their mature colour: Individual plants with off-colour fruit should be pulled. Any fruits displaying signs of disease, off-type vegetative characteristics, and fruits slow to ripen should not be harvested for seed production. Select for early fruit ripeness, flavour, and plants with good leaf cover. Note: mosaic virus can be carried in the seed.

\*\*\*These are suggested tips and strategies for selecting a true to type Peacework pepper, you are welcome to look for other characteristics that you find appealing or suit your farm, market or growing condition. Please make note of it if you do so. \*\*\*

*Peacework pepper was developed a decade ago specifically for Northeastern organic production by Liz Henderson, Peacework Farm & Cornell University. It was bred for earliness, Cucumber Mosaic Virus (CMV) resistance and yield, with selections for fruit size & wall thickness.*



A few examples of CMV on pepper fruits and plants. The virus shows up in a variety of ways (puckering and mottling of leaves, stunted plants, internal and external damage to fruit) so a little research may be helpful to successfully select for CMV resistance. (1st photo credit: Cornell University)

